



**£85,000**

**Taylor Place**

London, E3 2PJ

Available on the shared ownership scheme with 25% ownership is this well presented 2 bedroom apartment set n the 5th floor of a modern gated development in Bow.

The property features a bright and spacious open plan reception room with access to a private balcony and modern fitted kitchen.

There is a large double bedroom, 2nd bedroom, storage and a family bathroom.

The property is located just a few moments from Bow Road Station and Bow Church DLR with Westfields, the Olympic Park and Stratford Station also close by.

Also available on a full 100% purchase: contact us for further details,

Rent Payable: £823.82 per month

Service Charge: £106.76 per month

Leasehold: 90 years

Ground Rent: n/a

Council Tax: Band D

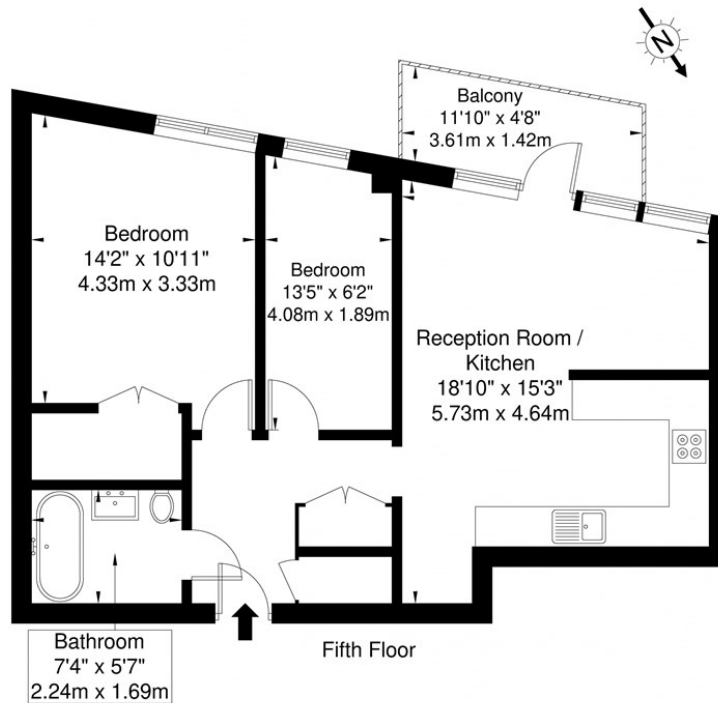






## Fodent Court, Taylor Place, E3 2PJ

Approx. Gross Internal Area = 62.3 sq m / 670 sq ft



Ref

Copyright **BLEU PLAN**

Disclaimer : Floor plan measurements are approximate and are for illustrative purposes only  
While we do not doubt the floor plan accuracy and completeness, you or your advisors should  
conduct a careful, independent investigation of the property in respect of monetary valuation

Energy Efficiency Rating		
	Current	Potential
Very energy efficient - lower running costs		
(92 plus) <b>A</b>		
(81-91) <b>B</b>		
(69-80) <b>C</b>		
(55-68) <b>D</b>		
(39-54) <b>E</b>		
(21-38) <b>F</b>		
(1-20) <b>G</b>		
Not energy efficient - higher running costs		
<b>England &amp; Wales</b>	EU Directive 2002/91/EC	

Agents Note: Whilst every care has been taken to prepare these particulars, they are for guidance purposes only. All measurements are approximate and are for general guidance purposes only and whilst every care has been taken to ensure their accuracy, they should not be relied upon and potential buyers/tenants are advised to recheck the measurements

### OFFICE ADDRESS

88 Cheshire Street  
London  
E2 6EH

### OFFICE DETAILS

0207 739 6969  
info@peachproperties.com  
www.peachproperties.com